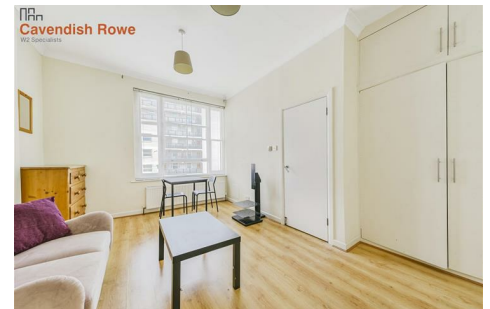


Hatherley Grove, W2 5RB

£1,500 Per Month

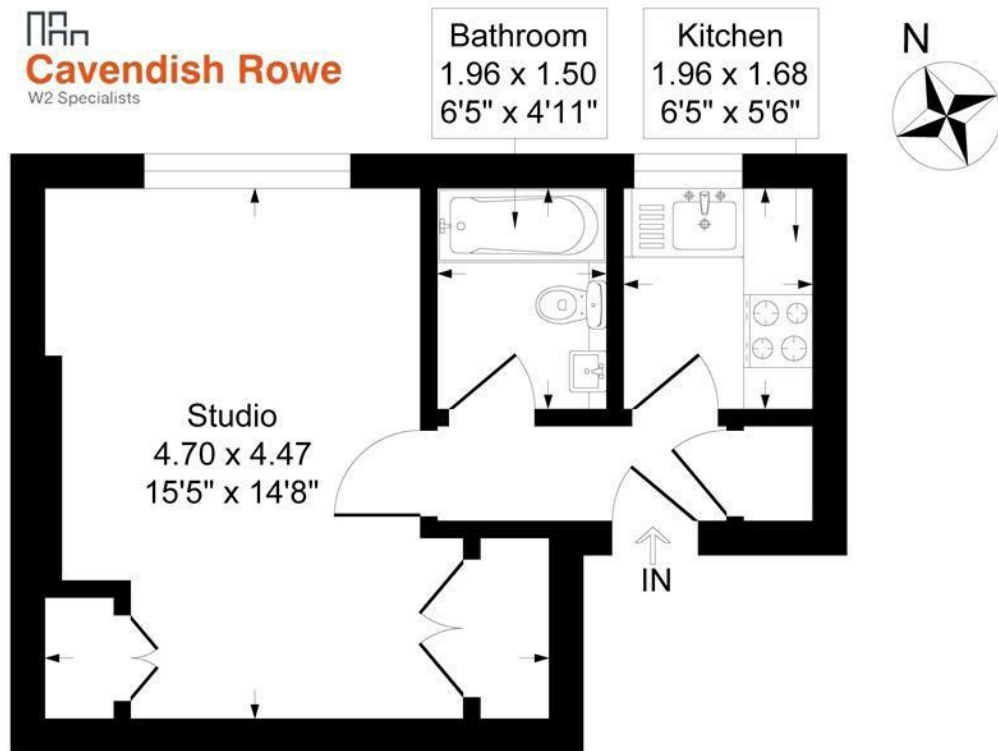


A fantastic second floor studio apartment within a Victorian period conversion ideally located close to Bayswater, Queensway, Paddington, Notting Hill and Royal Oak with Gails, Waitrose and The Whiteley London nearby.

The property benefits from an extremely spacious living area with a pull down double bed that can be stored away behind double doors with extra storage above. Available now.


Hatherley Grove, London, W2

Approximate Gross Internal Floor Area = 27.8 sq m / 300 sq ft



Second Floor

Illustration for identification purposes only, measurements are approximate, not to scale.

Energy Efficiency Rating		
	Current	Potential
Very energy efficient - lower running costs		
(92 plus) A		
(81-91) B		
(69-80) C		
(55-68) D		
(39-54) E		
(21-38) F		
(1-20) G		
Not energy efficient - higher running costs		
	66	76
England & Wales	EU Directive 2002/91/EC	

Environmental Impact (CO ₂) Rating		
	Current	Potential
Very environmentally friendly - lower CO ₂ emissions		
(92 plus) A		
(81-91) B		
(69-80) C		
(55-68) D		
(39-54) E		
(21-38) F		
(1-20) G		
Not environmentally friendly - higher CO ₂ emissions		
	67	67
England & Wales	EU Directive 2002/91/EC	